

## Kunde Jersey Farm Hosts Iowa Picnic

Jersey breeders from the Hawkeye State gathered for the 30th summer meeting and picnic of their state Jersey organization on June 30, 2012, at Kunde Jersey Farm in Manchester. Jersey enthusiasts enjoyed a potluck dinner, recognized juniors and toured the farm operated by the Kunde family.

Megan Lien, Calmar, was named winner of the Iowa Jersey Youth Achievement Award. The daughter of Gary and Patty Lien graduated from South Winneshiek High School in 2012 and will attend Iowa State University in the fall. She received a heifer calf donated by Summit Farm, Lester, for winning the award.



Lien

Megan now owns four Registered Jerseys that are part of her family's Holstein herd.

She has served as president of her local 4-H club and FFA chapter and was the Winneshiek County Dairy Princess in 2011. She earned a Greenhand Degree and Chapter Farmer Degree from FFA and was a member of the 4-H dairy judging team that advanced to the national contest in 2010.

In high school, Megan was active in band and sports, performed in musicals and belonged to the National Honors Society. She was a four-year member of the track and cross-country teams, serving as captain of the cross-country team that competed in state finals in 2011.

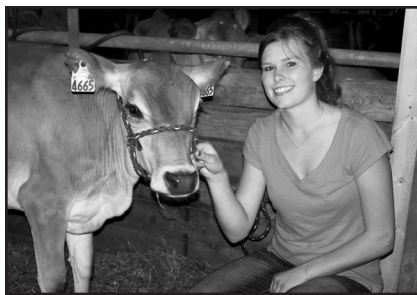
The Iowa Jersey Cattle Club Memorial Scholarship was awarded to Kara Maxwell, Donahue. The daughter of John Maxwell and Trish Reisener is a freshman in the honors program at Iowa State University, where she is double majoring in



Maxwell

agriculture business and dairy science. She is responsible for the heifer raising program on the home farm, Cinnamon Ridge Jerseys, and has a dream of managing her own herd some day. Her current herd of Registered Jerseys includes about 50 head.

Kara has shown Jerseys at the Iowa State Fair since she was 11 and also exhibited at the Indiana and Illinois state fairs. She was



Megan Lien poses with the Registered Jersey heifer, Summetz Regis Cara, she received from Summit Farm as a prize for winning the Iowa Jersey Youth Achievement Award.

a member of the 4-H dairy judging team that represented the state in competition at the North American International Livestock Exposition last fall. Earlier in the year, she was selected for the second Jersey Youth Academy and attended the National 4-H Dairy Conference held in conjunction with World Dairy Expo.

Kara has placed in the National Jersey Youth Production Contest three of the past four years and topped the competition this year with her homebred cow, Cinnamon Ridge Rasmus Lily. She placed fifth in this year's National Jersey Youth Achievement Contest and won the William A. Russell Memorial Scholarship.

Kara was a member of her school's varsity soccer team for four years and captain of the cross country team. She was president of the National Honors Society and graduated valedictorian of her class.

Ashley Pugh, West Union, was crowned as the 2012 Iowa Jersey Princess. The daughter of Andy and Tricia Pugh is a freshman at Upper Iowa University, majoring in agriculture business and biology.



Pugh

Though she is not from a dairy farm, Ashley developed a love of the Jersey cow while participating in FFA and working at Hei-Bri Jerseys in Hawkeye. She has been a member of the chapter FFA dairy judging team that competed at the Tri State Dairy Expo at Northeast Iowa Community College and earned a gold award in dairy showmanship at the state level. At the FFA public speaking contest last year, she gave a speech entitled "Why Jerseys" to convince dairy producers to switch to Jerseys.

After lunch, members toured Kunde Jersey Farm, which is operated by Donna and David Kunde and their grown children, Jennifer Zumbach and Daniel

and Michael Kunde. The Jersey herd of 200 milking cows is enrolled on REAP, a charter member of Project Equity and a contract advertiser in the Jersey Journal. The AJCA lactation average for 2011 is 16,598 lbs. milk, 798 lbs. fat and 568 lbs. protein on 144 cows. The herd includes 22 Excellent and 149 Very Good cows and has an average appraisal of 84.2%.

Facilities have been extensively renovated in the past two years to accommodate internal growth of the herd. In 2009, a double-12 parallel parlor was installed, a loafing shed and commodity shed constructed and freestalls added to an existing shed. Last summer, the tie stall barn was converted to freestalls; last winter, a heifer shed was built on Michael's place a mile from the home farm.

The family farms about 700 acres, raising feed for the herd and selling the balance. About 450 acres are set aside for corn, 60 acres are alfalfa, 60 acres are rye and wheat and 140 acres are beans. Cows are pastured during the summer and fed a total mixed ration. The dairy purchases most of its hay and a protein mix.

Jennifer is the secretary of the Iowa Jersey Cattle Club and editor of the *Iowa Jersey Today*.